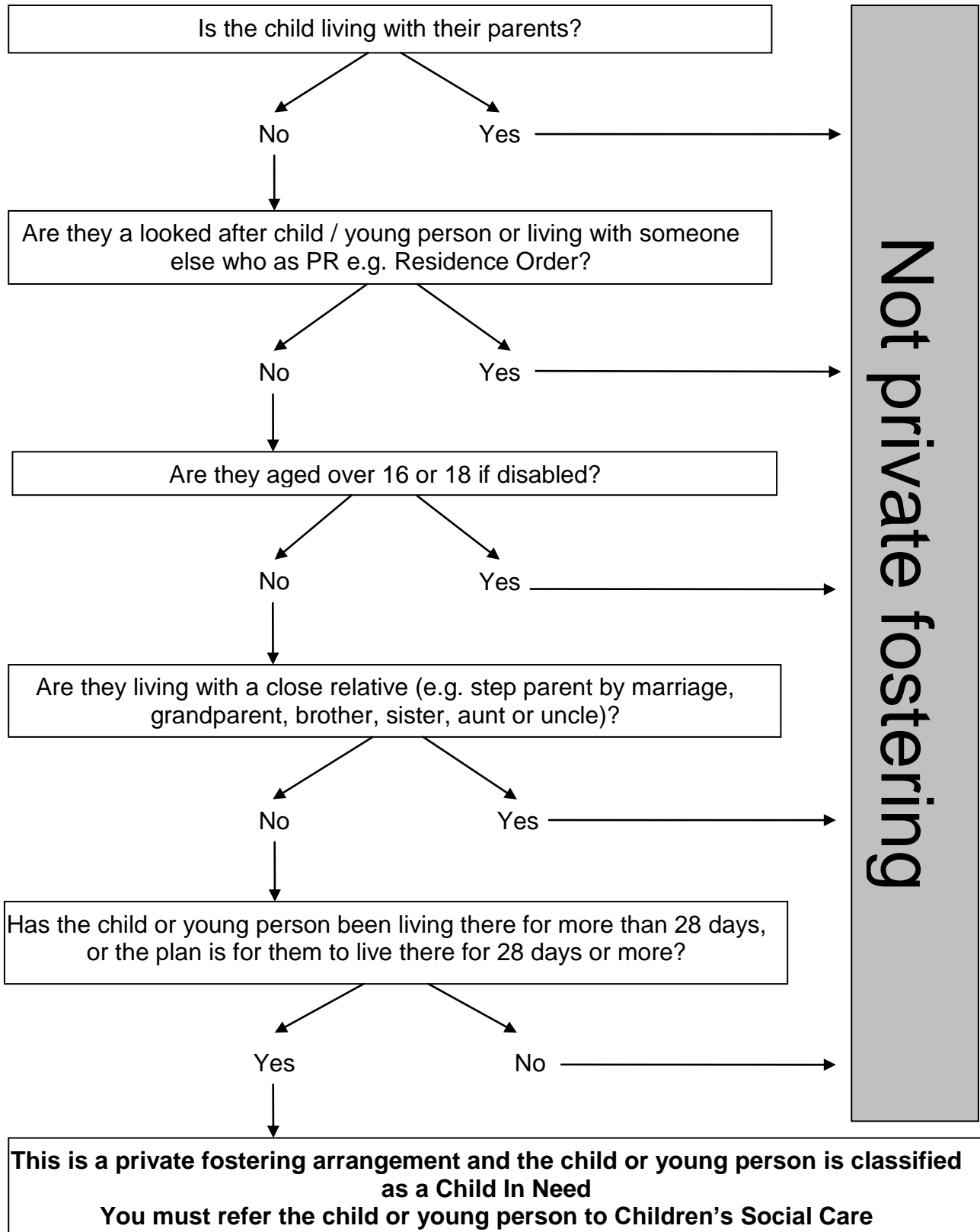


Is this a Privately Fostered Child or Young Person?



Privately Fostered Children or Young People

Definition of private fostering

A private fostering arrangement is a private arrangement for a child under the age of 16 (or 18 if they are disabled) to be cared for by someone who is not a parent or close relative for more than 28 days. The Local Authority is not involved in placing the child or young person in this private arrangement.

A child or young person is privately fostered if they are living with extended family members such as cousins, great aunts, great uncles or a family friend. They may be living outside of their parents care due to;

- Child or young person is asked to leave the family home
- Parent is in prison / hospital / homeless
- To avoid becoming a looked after child
- Parent has left the local area and child has remained to complete academic studies
- Child leaves due to family dysfunction or because they have been living with parents who have substance misuse problems or other difficulties
- Parent decides to place child with extended family member
- Child is placed with extended family for religious or economic reasons

Responsibilities

Private foster carers are responsible for providing the day-to-day care of the child in a way which will promote and safeguard his welfare. However the overarching responsibility remains with the person who has parental responsibility for the child.

The Local Authority has legal duties towards private fostered children / young people and must satisfy itself that welfare of children who are, or will be, privately fostered within their area are satisfactorily safeguarded.

If you or your agency become aware of a child or young person living in a private fostering arrangement you must notify the Local Authority Children's Social Care by **telephone in one working day** and you will be asked to follow this up in writing. Children's Social Care can be contacted via the First Contact Team, 01332 641172.

For further information about how to make a referral to Children's Social Care, please see the Derby and Derbyshire Safeguarding Children procedures. These can be found on the local safeguarding children procedures and guidance page of www.derbyscb.org.uk or directly via <http://derbyshirescbs.proceduresonline.com/chapters/contents.html>.