



Derby and Derbyshire
Safeguarding Children Partnership

Thank you for joining us.



The event will begin shortly.

Stakeholders Webinar

11th December 2025

DDSCP Independent Scrutineer

- Critical friend
- Challenge
- Assurance
- Areas for scrutiny



Amanda Clarke, Independent Scrutineer
Derby and Derbyshire Safeguarding Children Partnership



DDSCP Annual Report for 2024/2025 and new Governance Arrangements

Amanda Ratcliffe, Interim Partnership Manager
Derby and Derbyshire Safeguarding Children Partnership

Working Together 2023

Governance Arrangements

Revision & Implementation



Key Impacts on Governance Arrangements

- Lead Safeguarding Partners (LSPs)
- Shared responsibility and accountability
- Annual reporting requirements
- Alignment with National Frameworks
- Strengthened oversight of multi-agency safeguarding arrangements (MASAs)
- Focus on outcomes for children

DDSCP organisational structure

Thematic Groups



Highlights of previous priorities 2022/2025



**Domestic
abuse**



**Early
Help**



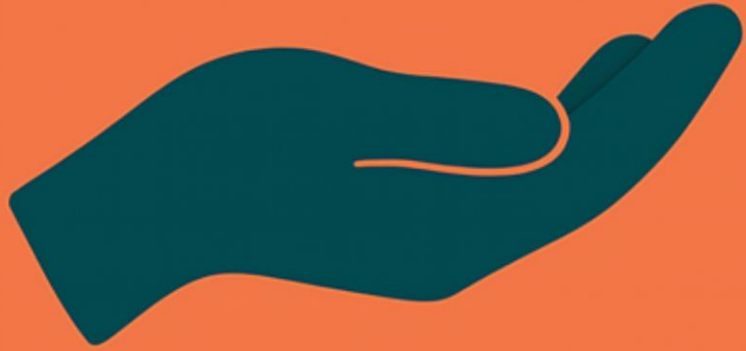
**Child
Exploitation**



Domestic abuse

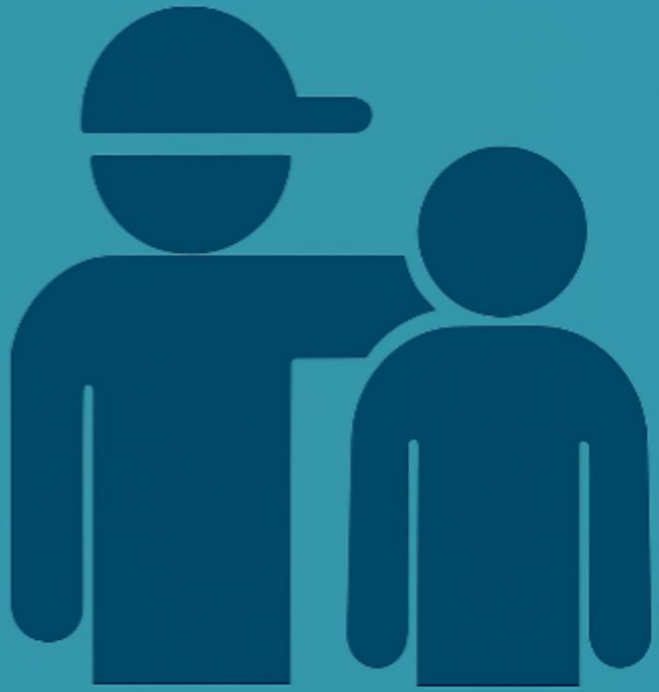
Strengthening multi-agency responses

- Local triage process
- Training
- Threshold guidance
- Risk assessment
- SDAT (Operation Encompass)



Early Help

- Oversight and assurance
- Quality assurance audit
- Shared learning and practice improvement
- Communications and briefings
- Data and local authority involvement
- Direction for 2025/2026



Child Exploitation

- Context and risk awareness
- Monitoring and intelligence
- Prevent and neurodiversity
- Lived experiences of children
- Future steps for 2025/2026

Learning, training and development

- Police - joint training with social care, improving relationships and agreed working practices.
- Local authority – Prevent training across both areas.
- Education – DSL networks established.

Multi-agency training:

- 19 training events delivered over 68 sessions
- Over 2,300 delegates attended training
- Over 4,000 e-learning courses completed

Partnership working



**Strengthening collaboration
and continuous improvement**

What's next for 2026



**Upcoming training, events
and resource launches**



Derby and Derbyshire
Safeguarding Children Partnership

THANK YOU !

Insights from Reviews: Shaping Training and Development in 2026

Sarah O'Brien, Senior LOD Officer
Lisa Bestwick, Training Officer

11th December 2025



Derby and Derbyshire
Safeguarding Children Partnership



Rapid Reviews and LSCPRs

- Completing a rapid review
- Timely response
- Commissioning a local child safeguarding practice review (LCSPP)
 - System or practice improvements needed
 - Recurring themes
 - Concerns about multi-agency working

Learning review

- Drawn from 2020 – 2025.
 - 4 CSPRs
 - 5 Rapid Reviews
 - 2 CSPRs (out of area – not published)
 - All ages (2 babies, 3 early years, 2 primary and 4 secondary age)
 - Varied lived experiences
- Common learning themes identified
- Translated into practice principles

Learning Theme

Practice into action

Top Tip



Assessment and planning

Completing holistic assessments and plan whilst ensuring we are identifying long term risk alongside vulnerabilities and needs

Work collaboratively to get the best outcomes for our children

Learning Theme

Practice into action

Top Tip



Engaging children and parents

Management oversight - support practitioners to feel confident in engaging families who are hesitant to accept support

Explore the cause of behaviours

Learning Theme

Practice into action

Top Tip



Recognising children's vulnerabilities and gaining their voice

Understand some of the difficulties working with teenagers and ensuring we are to identifying vulnerabilities.

Fully engage with children and young people and find ways to overcome any barriers

Learning Theme

Practice into action

Top Tip



Intervening at the earliest possible stage

Make sure opportunities are not missed to co-ordinate help and support at the first sign of concern.

Respond early, collaborate together

Learning Theme

Practice into action

Top Tip



Understanding the impact of parental vulnerabilities on safeguarding children

Recognising that parental capacity can be over-estimated when abuse, mental health, or substance use are present. A child is a victim in their own right if they experience domestic abuse.

Keep the focus on the child

Learning Theme

Practice into action

Top Tip



**Children living away from their
parents**

Remembering that removal from parental care
doesn't always guarantee safety.

Always listen actively to the child's voice

Learning Theme

Practice into action

Top Tip



Cumulative harm

Good practice includes connecting signs of escalating risk for children

Be professionally curious

Learning Theme

Practice into action

Top Tip

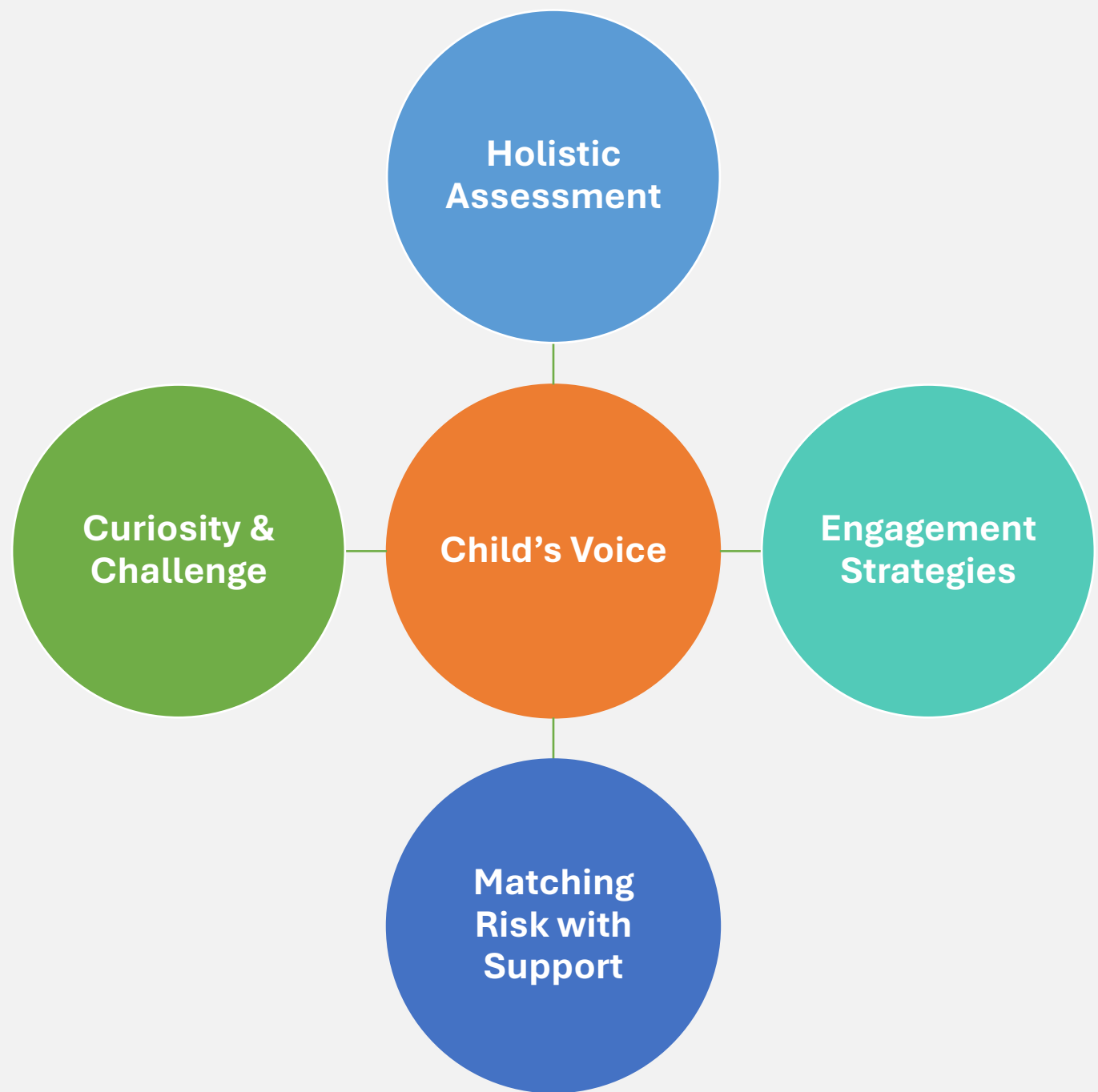


Responding to children's physical, mental and neurodiversity needs

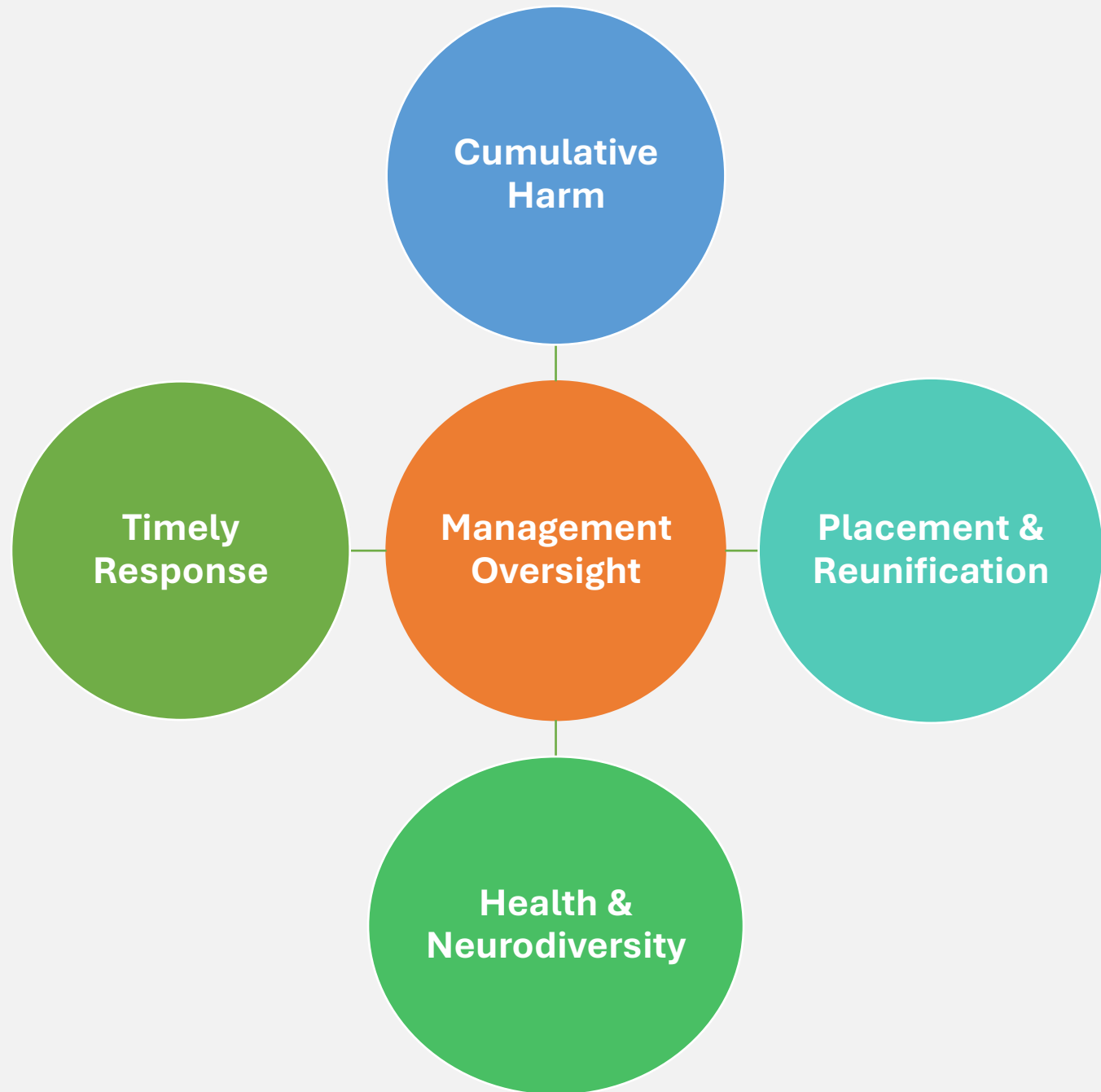
Making links between children's health and neurodiversity is necessary to ensure that increased vulnerabilities are not overlooked

Seek specialist input for enduring health needs

Key reflections for practice and leadership



Key reflections for practice and leadership



Resources for practitioners

[Best Practice Guide: Child in Need](#)

[Best Practice Guide: Special Guardianship Orders](#)

[Best Practice Guide: Personal Health Budgets](#)

[Practice Guidance on Bruising in Babies and Children \(Feb 2025\)](#)

[Best Practice Guide - Reunification \(July 2025\)](#)

[DDSCP Graded Care Profile Guidance \(April 2020\)](#)

[Three Steps to Baby Safety \(November 2024\)](#)

[Pre-birth Protocol \(Nov 2025\)](#)

Resources for practitioners

[Learning Reviews](#)

[Child Safeguarding Practice Reviews \(Theo\)](#)

[Best Practice Guides](#)

[Neurodiversity and Radicalisation Briefing \(2023\)](#)

[Vulnerability of children not in school \(2023\)](#)

[NSPCC library catalogue](#) (MDS20, PDS20, Theo and Zac)

[DDSCP Briefing Safeguarding school age children and young people - Learning from reviews 2021](#)

Shaping training and development for 2026

practitioner opportunities for 2026



- Training highlights
- DDSCP training programme
- Scenarios and case studies
- Joint training opportunities
- Practitioner events

Practitioner Feedback and Support



- What learning or training sessions would be most beneficial for you?
- How can you or your agency support delivery of multi-agency training?

Please send an email to DDSCPtraining@derby.gov.uk

Insights from Reviews: Shaping Training and Development in 2026

DDSCP Training Courses

<https://ddscp.event-booking.org.uk/>



Derby and Derbyshire
Safeguarding Children Partnership



Juanita Murray

**Designated Nurse Safeguarding Children
Chair of CDOP**

Keeping Babies Safe

Evaluation and Impact Report (2024)



- Reviewed strategy identified need for consistent approaches to keeping babies safe.
- Enhance recognition of baby and parental vulnerabilities for effective safeguarding
- Never Ever Shake Your Baby video launched.
- Focus groups made recommendations for improvement and developments.
- Co-sleeping and bed sharing guidance launched.
- Over 100 KBS Champions trained.
- Two Roadshows delivered to support the early years sector.



Keeping Babies Safe Developments

- The voices of 460 parents
- A larger audit of health records – safer sleep and safe handling
- Review of the guidance of the co-sleeping and bedsharing tool
- Survey to practitioners and review of the guidance and tool of Every Baby Matters
- The Giving HOPE Project



KBS Strategy and Developments

Safety first if co-sleeping/bedsharing

Practitioners who visit you to see you and your baby may review this checklist with you. Please use it yourself before you choose to bed share. Please follow safer sleep advice and contact your Midwife or Health Visitor if you have any questions. Do not sleep with your baby on your sofa or armchair this increases the risk of Sudden Infant Death Syndrome (SIDS) by up to 50 times (Lullaby Trust). If you answer yes to any of these questions you are advised not to co-sleep/bed share due to the increased risk of SIDS (also known as cot death).

Question	Y/N	Why this increases the risk
Do either you or your partner smoke? (Including during pregnancy)		Smoking increases the risk of SIDS
Have you or your partner drunk alcohol in the past 24 hours?		Any alcohol use changes your sleep pattern and increases the risk of SIDS
Have you or your partner recently taken any drugs or prescribed medication that may make you sleepy?		Taking any drugs or prescribed medication can make you sleepy increases the risk of accidental death whilst bedsharing
Are you or your partner very tired? (less than 4 hours sleep in 24 hours)		Excessive tiredness will affect your sleep pattern and is a risk if you bed share
Was your baby born early (before 37 weeks) or weighed less than 2.5kg or 5.5lbs		Babies who are born early or who are very small are at higher risk of SIDS
To reduce the risk of SIDS it is important not to bedshare in 'out of normal routine' situations. For example, if your baby is unwell or doesn't normally bedshare with staying with friends; when on		If it is not your normal routine to bedshare please consider if it is safe to do so by using this check list.

Adapted from NHS North 'Never Ever Shake Your Baby'.

SAFE HANDLING 'Never Ever Shake Your Baby'



Three Steps for Baby Safety Partnership Strategy to Support the Safety of Babies in Derby and Derbyshire Safer Sleep | Safe Handling | Safe Space



Every Baby Matters: observations and conversations



Every Baby Matters: observations and conversations

Identifying vulnerabilities in families who care for an infant

- Five Key Messages**
- It matters that all babies are safe.
 - It matters that their needs are met immediately.
 - It matters that families feel supported.
 - It matters that we understand the relationship between babies and their parents/carers.
 - It matters that we understand any vulnerabilities or risks that affect a baby's care and development.

- Please consider**
- What is it like to be a baby within the family?
 - Are there any vulnerability factors?
 - What support can be offered?

What support can be offered

Local single agency support to include a quality conversation with the family to identify potential vulnerabilities. Refer to the Every Baby Matters Vulnerability Tool and Guidance Document.

DDSCP Multi Agency Early Help Assessment

DDSCP Pre Birth Assessment Protocol

Consideration of safeguarding or child protection DDSCP Threshold document.

Derby and Derbyshire Safeguarding Children Partnership Procedures.

- Useful contacts for support**
- Derbyshire 0-18 Service (Health Visiting & School Nursing)**
01246 515100 (Mon - Fri 9am - 4.30pm)
- Derby City 0-18 Service (Health Visiting & School Nursing)**
0200 1245086 Option 3
- Derby City Professional Consultation Line:**
01832 300 329 (Mon - Fri 10am - 4pm)
- Derbyshire Consultation & Advice Service for Professionals:**
01629 535 353 (Mon - Fri 10am - 4pm)
- Derby City**
01332 641 172 (Mon-Spm), 01332 956606 (out of hours)
Note: telephone referrals to be followed up within 48 hours via Derby Children's Social Care Online Referral System
- Derbyshire**
01629 535 353 (Mon-Spm), 01629 536000 (out of hours)
Note: All requests for support should be made to using online [Safeguarding Point referral form](#)



December 2022

The Giving Hope Project



Review of Childrens Deaths

The Joint Agency Response JAR

Aims of the JAR

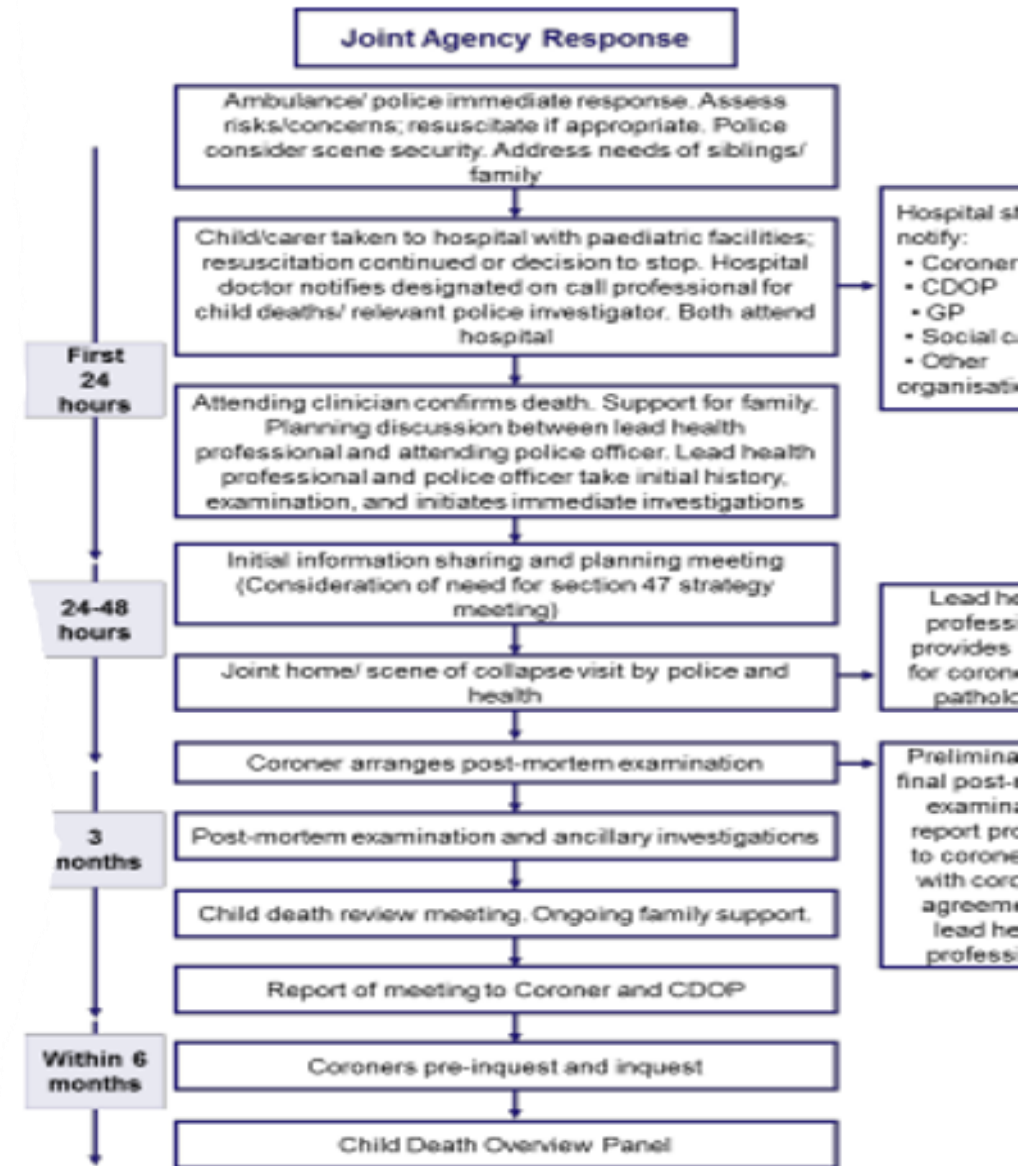
- Establish, as far as possible, the cause of the child's death
- Identify any potential contributory or modifiable factors
- Provide ongoing support to the family
- Ensure all statutory obligations are met
- Learning in order to reduce the risk of future deaths

Joint Agency Response

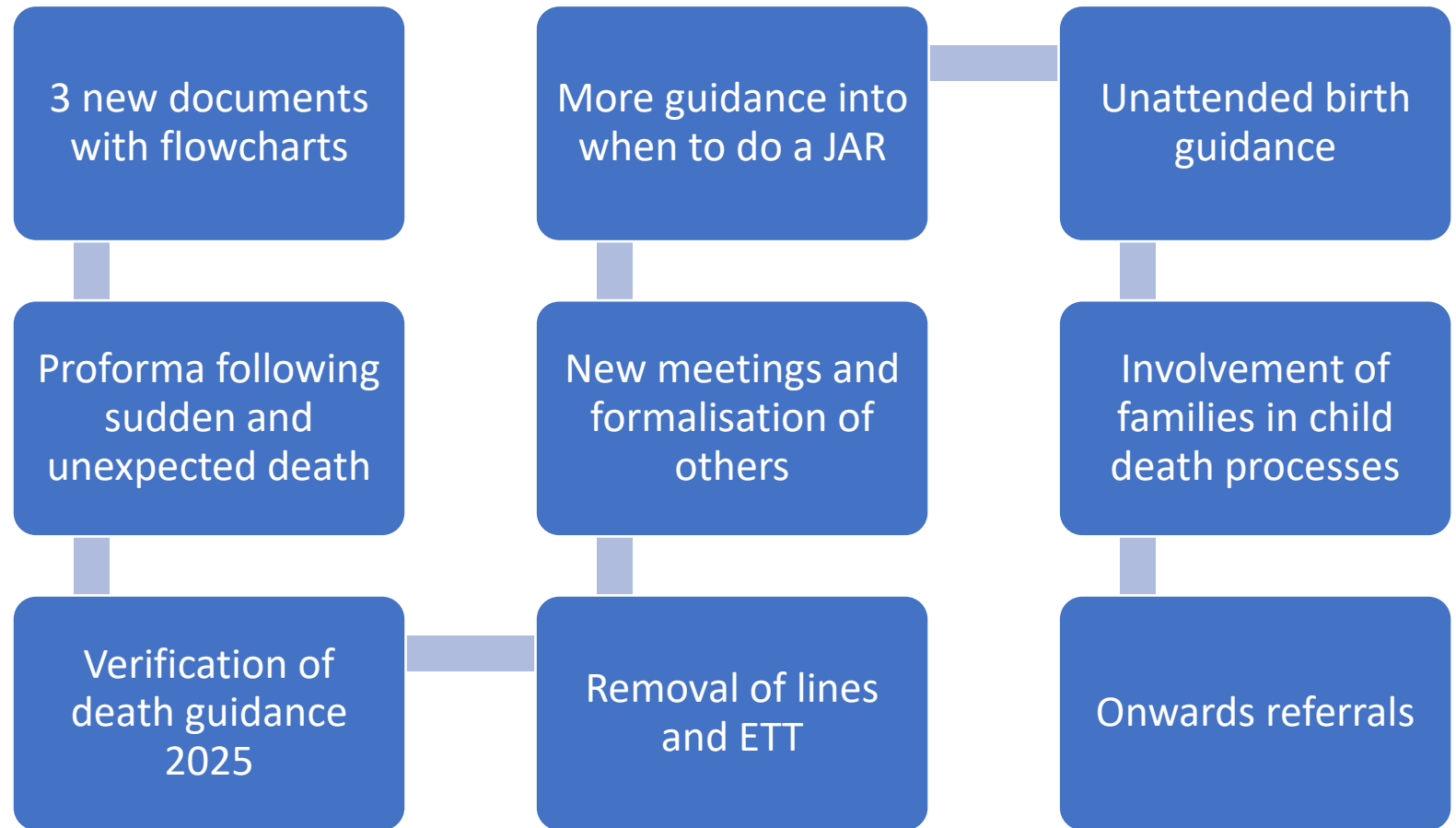
Coordinated multiagency response

- History of events
- Joint examination
- Kennedy samples
- Scene of death visit
- PME
- Early information sharing meeting
- Ongoing support
- CDRM

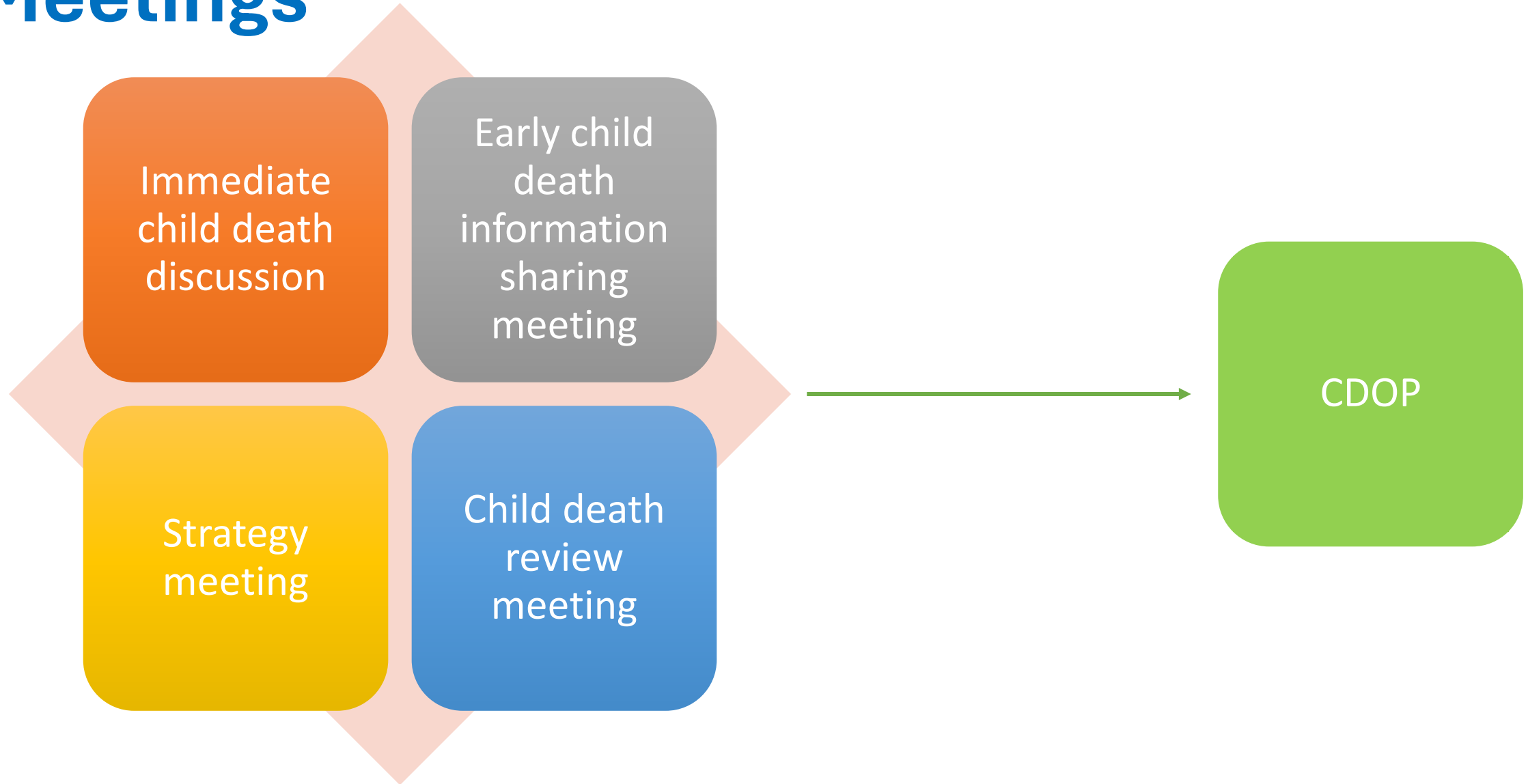
Joint Agency Response exists in a locality, the role of lead health professionals be taken by the senior attending paediatrician.



Key Changes



Meetings



The reflections of a bereaved mother

10 suggestions

- Consider and write down key sentence to help you feel confident & prepared
- It is ok to show emotion, families will feel this is "human" and appropriate
- Explain that you are trying to do everything possible to help them understand why their child has died
- should ask all the questions that you need to.
- Be patient. Be respectful of possessions and their home.
- never share new information without warning.
- Explain the next steps and keep parents informed about where their child is.
- Confirm who the key worker is
- Refer to a support organisation.
- Be mindful of siblings needs.



Domestic Abuse Thematic Group

DCS Kerry Pope, Head of Crime
Derbyshire Constabulary



Highlights

- **DA Handbook:**
 - Completed and launched
- **SDAT:**
 - Transition to Op Encompass
- **Governance:**
 - Performance Framework under review
- **Future Steps:**
 - Benchmarking and progress tracking
 - Review of DA Handbook for impact

Online Harms Thematic Group

Chris Marriott, T/Detective Supt and Director of
Intelligence
Derbyshire Constabulary



Governance, data, and policies

- **Governance:**
 - Structure under review
 - New Chair
 - Focus on risk-based priorities
 - Wider education representation
- **Data:**
 - Strengthen local intelligence across agencies
- **Policies:**
 - Online harms procedure updated (2024)
 - Draft policy on financially motivated extortion

Resources and training

- **Briefings:**
 - Online bullying
 - Communicating and engaging with parents about online safety
 - Nudes and semi-nudes
 - Healthier screentime
 - Harmful online challenges/hoaxes briefing note under review
- **Training & Engagement:**
 - NSPCC workshops on safe environments, parental controls, and new tech
 - DDSCP webinars included “Behind the Screen: The Reality of Online Harms.”
 - Financially motivated extortion training for police training
 - Multi-agency awareness raising via social media and webinars

Neglect Thematic Group

Amanda Ratcliffe, Interim
Partnership Manager

Derby and Derbyshire Safeguarding
Children Partnership



Strategic Aim and Progress

- Strategic Aim – to reduce risk and impact of neglect
- Progress - draft Neglect Strategy developed
- Priorities:
 - Early intervention and prevention
 - Clear identification and definition of neglect
 - Empowering families and resilience
 - Poverty-aware practice
 - Workforce learning and development
- Updated Terms of Reference with broad partner membership, co-chaired by both local authorities.
- Exploring NSPCC “Snapshot” benchmarking tool.

Impact and Matters Arising

- Impact - workshop secured shared understanding and partner ownership of strategy.
- Matters Arising:
 - Need to involve children, young people, and families in shaping
 - Pace affected by competing priorities



Derby's Families First Partnerships Programme

Update
December 2025

Context



Guidance published in March 2025,
with additional funding now
confirmed to the end of 2028/9



Raising awareness and talking to
colleagues and professionals

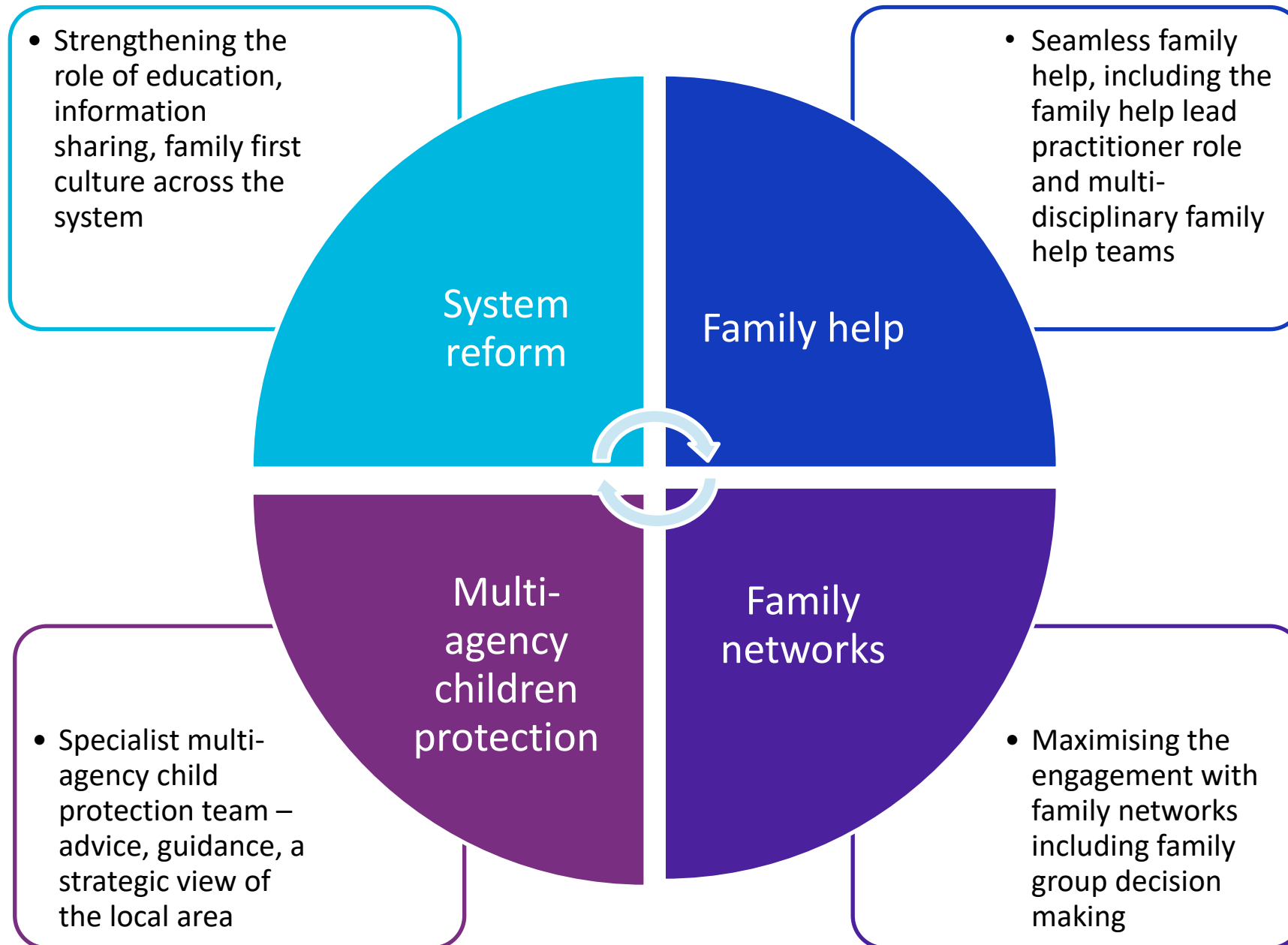


Local area governance in place with
an initial focus on family help and
multi-agency child protection



Seeking views of professionals to
shape our plans

Key features of the reforms



Family help

What will good look like?

- We're seeking to **change conversations through our strength-based approach** to shift professionals to understanding threshold in the context of need, best interests, and the right professional relationships
- **Locality-based conversations**, ensuring that children and families benefit from timely support not 'bound' by processes
- **Understanding parents and family's barriers** and working together to reduce these

How will we get there?

- Complete a **mapping of services** available to families, within the universal and family help space to shape pathways and service developments
- Review vulnerable children's meetings, with proposals **co-produced for locality-based conversations**
- **Strengthen and align** team around the school activities
- Co-produce Derby's '**family help**' assessment

Multi-agency child protection

What will good look like?

- Professionals across Derby are seeking to **utilise the strengths that we have in place**, ensuring children and young people continue to be effectively protected from harm
- Develop and implement a **central multi-agency child protection team**, which builds on our Multi-Agency Safeguarding Hub
- **Targeted work** on key areas (i.e., domestic abuse and neglect)
- Develop our approach to **advocacy and peer support**

How will we get there?

- Complete an initial **multi-agency child protection team options appraisal**
- **Co-produce** with existing child protection professionals across partners, proposals for a **single Multi-Agency Child Protection Team**
- Development of the **Lead Child Protection Practitioner** role
- Gather **insight from families with lived experiences** of child protection processes to inform developments
- Review **multi-agency domestic abuse triage arrangements**

Family networks

What will good look like?

- An established **Family Alliance**, ensuring service developments are shaped by lived experiences
- Explore how we can **build trust in services and better understand barriers to accessing support** as we seek to focus on providing the right help, at the right time
- Embed the **family first culture**, with all professionals considering the family network at the earliest opportunity
- **Advocacy and peer to peer** support

How will we get there?

- Complete mapping of the **current offer for families**, alongside scoping a Family Alliance, led by Derby Youth Alliance Steering Group
- Agree a **model of delivery for family group decision making**, from the earliest opportunity
- **Family Led, Family Time** project
- **Partnership sign-up to strength-based delivery**, to support more families to remain safely within their family network

Questions



Derbyshire's Vision for Families First Partnership



Derbyshire's programme

Child and family centred

- Relationship based
- Coproduced
- Child and Family voice

Prevention and Early Intervention

- Shift from crisis-led to proactive early support
- Builds on family strengths
- Uses data and community insight to target need

Supported Workforce

- Continuous learning and development
- Culture of high support, high challenge

Integrated Partnership Working

- Special Education Needs Disabilities – Derbyshire's fourth pillar
- Common practice model and approach
- Shared goals, data and accountability
- Professions are valued and respected equally

Reduced Demand

- Supporting families to stay safely together
- Long term reduction in statutory intervention
- Decreasing number of children coming into care



Derbyshire's Vision

For Children

- Children are safe at home and in their community
- Children have stable and supportive relationships
- Children's views shape the support they receive
- Fewer children need statutory intervention or come into care

For Families

- Families are supported to stay safely together
- Families receive help and support early
- Families feel listened to, respected and will lead their own plans
- Family and community strengths are valued and built upon

For Workforce

- Practitioners have time and space to build relationships with children and families
- Staff feel supported, trusted and valued
- Practice is supported by evidence, reflection and the lived experience of children and families

For System

- More children and families receive effective early help
- Resources are used more effectively across the system
- Data and insight are shared to improve decision and learning



Where are we up to in Derbyshire

- Fully established Delivery Group, with multiagency partners and voluntary sector engagement.
- Core workstreams established to ensure we deliver against the expectations of DfE.
- Fully supported Delivery Plan will be submitted to DfE by 19 December 25.

Family Help:

- Consideration , reunification, preventing care, and complex needs.
- Moving towards a model where all partners are confident and equipped to lead early help assessments.
- Strong leadership, a stable workforce, and a shared commitment to partnership working to provide a solid foundation for making this shift in the year ahead.

Stronger Families:

- A key development has been the integration of the Stronger Families Team within the Family Help pillar.
- Relational, strengths-based practice model with Family Solutions Meetings empowering families in Child in Need and Child Protection cases.
- Stronger Families Team integrated into Family Help, delivering intensive, evidence-based support for edge-of-care families and safe reunification.

Family Group Decision Making (FGSM):

- Scoping carried out, modelling trial planned for end of March 26.
- Training package around relaunch for family solutions meeting complete and ready for roll out in January 26.
- Improvement work regarding MOSAIC workflow underway.

Multi Agency Child Protection Teams (MACPT):

- A trial across two localities is planned for end of February 26.
- A request has been made to increase the establishment of Child Protection Managers.

Kerry Pope

Executive Board Chair

Closing comments